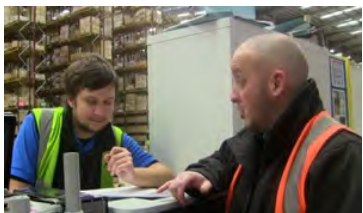


Semi- permanent warehouses – a turnkey solution

Mark Currie

Joint Chair WTG and
Chief Executive
Mantra Learning

Today, we train 3,000 people a year in GM and 15,000 nationally



What we do: LOGISTICS

- ▶ Apprenticeships - nationally
- ▶ Traineeships
- ▶ Job Gym - pre-employment training
- ▶ LGV and FLT training - nationally
- ▶ Rockbarr Logistics & Distribution
- ▶ Promoting logistics as a 1st choice career
- ▶ Supporting STEM in schools



Sector need

- ▶ More skilled people needed in rapidly growing reverse logistics
- ▶ How could we support it?
 - ▶ Skills to grade products
 - ▶ Skills to identify products
 - ▶ Skills to re-package products
 - ▶ Skills to put back into stock



Opportunity to use a spare patch of land



The Reverse Logistics Training Centre

- ▶ Key considerations:
 - ▶ Training centre
 - ▶ How to teach new skills
 - ▶ Speed because it was part grant funded
 - ▶ Work to a budget
 - ▶ Speed of planning process
- ▶ We gave the problem to WTG partners and this is the result





April 2018 - excavation works commenced

- ▶ Planned: 2,336m³
- ▶ Actual: 3,986 m³



May 2018: hardcore base

- ▶ Planned:
 - ▶ 40mm stone - 452 tonnes
- ▶ Actual:
 - ▶ 150 mm stone - 648 tonnes
 - ▶ 75mm stone - 367 tonnes
 - ▶ 40mm stone - 452 tonnes



May 2018: steel ring beam

- ▶ 1,691m steel
- ▶ 6.45 tonnes
- ▶ 600mm deep x 800mm wide



May 2018: membrane and sand

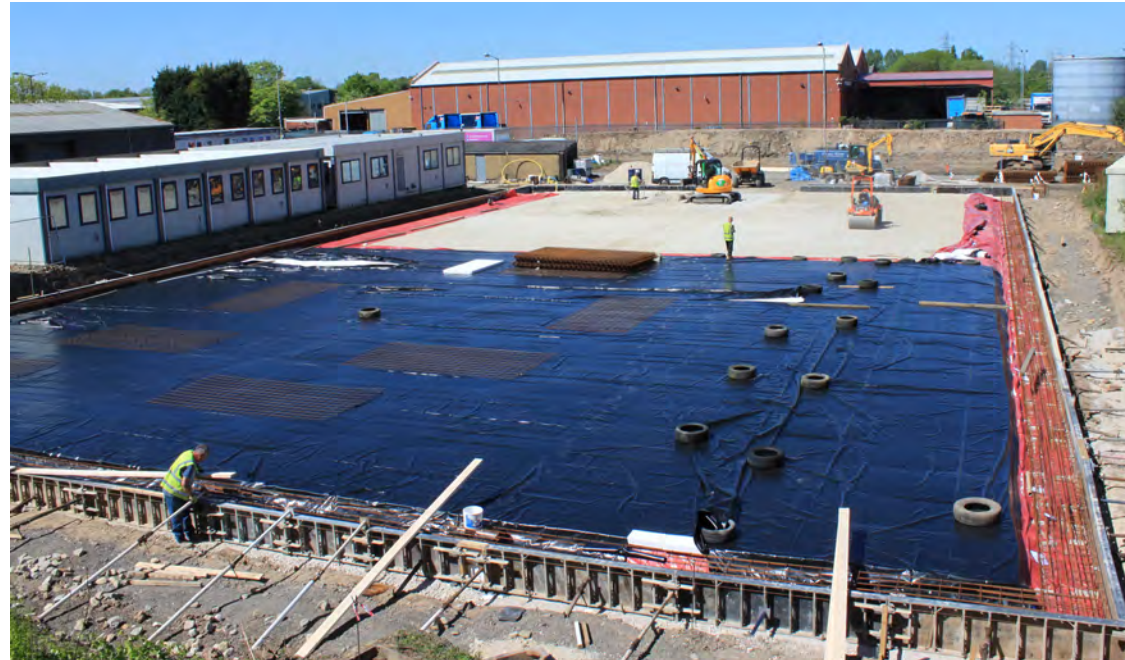


Blinding sand : 151 tonnes

1,673 m² gas membrane

May 2018: insulation

- 584 sheets of insulation



May 2018 - concrete slab laid

- ▶ 200 mm thick - 441m³ concrete
- ▶ 509 sheets of double reinforced steel - 18 tonnes

June 2018 - steelwork delivered and erected, roof and walls added



...in a week

July 2018: roller shutter door installed and internal spec finalised



August 2018: toilet block built



September 2018: Bradfields mezzanine floor built



October 2018 - Troax partitioning and A-Safe protection barriers installed



November 2018: Dexion racking and Ecolighting installed



December 2018: Building the link and 2 double doors



January 2019: Barlows electrics completed, heating installed and discharged all planning conditions



February 2019 - services connected, furnishings added and first meeting held



March 2019 - £1m later with 20,000 sq. ft.
of versatile space

