



In partnership with the Warehouse Technology Group & Mantra Learning



- Our Oxygen Product:
- Aesthetic curved roofline.
- Insulated walls and roofing.
- Cost for this project including all internal additions – circa. £1 million.
- 20,000 square feet of warehouse space.
- This calculates back to approximately £50 per square foot versus £100 per square foot on traditional build projects.





The UK #1 for temporary buildings

- First-class service and cost-effective, top-quality structures for over 45 years.
- Three types of structure for hire and sale – Oxygen, Neivalu & TempAstor.
- Servicing sectors including industrial, manufacturing, retail, logistics and sport and leisure.



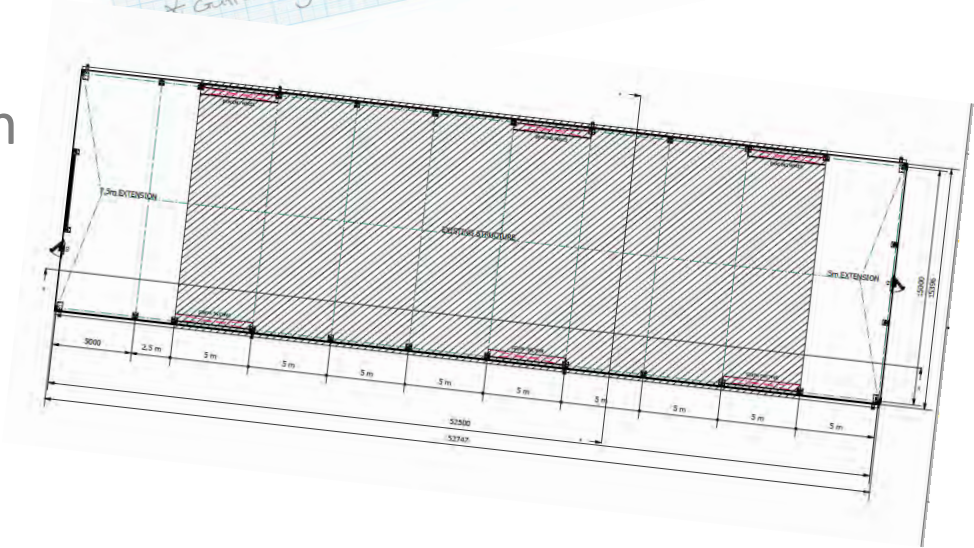
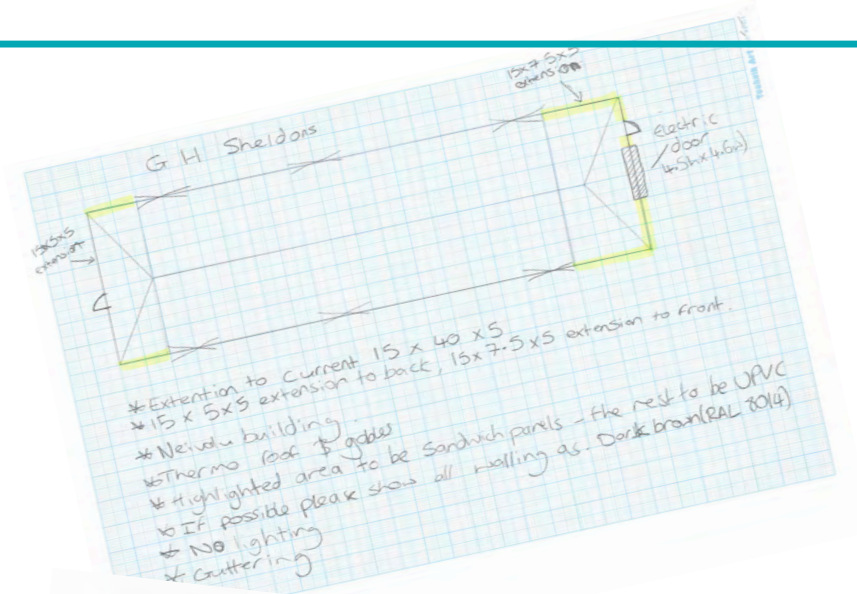
Speed of build

- We combine rapid installation with the highest standards of build. Construction takes, on average, a third of the time for a permanent building to be erected.
- This project for Mantra / WTG was delivered within a 6 month timeline from start to finish.
- William West Haulage, Derbyshire, purchased a 30m wide by 50m long Neivalu which our operational team installed in just 17 days – “Pure Build”.



Flexibility

- We help our customers to extend, reduce or relocate their temporary building to reflect market demand.
- GH Sheldon, a local Manchester business, has purchased three buildings as its business has grown.
- It recently added a 15m wide by 7.5m long extension in order to accommodate additional orders.
- The extension featured brown cladding to match existing structures, as well as personnel and roller shutter doors.



Built to last

- Our modular buildings are calculated to meet British Safety Standards.
- We work to Wind Loading BS6399 and General Snow Loading BS6399 - the same as permanent buildings.
- The robust nature of our temporary buildings means that some have been in use for more than 25 years.



Safety and security

- Our temporary buildings are often used to house high value products, from classic cars to white goods and electronics.
- Features can include secure walling and doors, fire rated panels and alarm systems.
- Spaciotempo's temporary structures and systems fully comply with British and EEC safety standards for structural integrity, fire and safety codes.



Turnkey solutions

- We can deliver anything from a Sport England-compliant sports facility to a basic storage warehouse.

We offer:

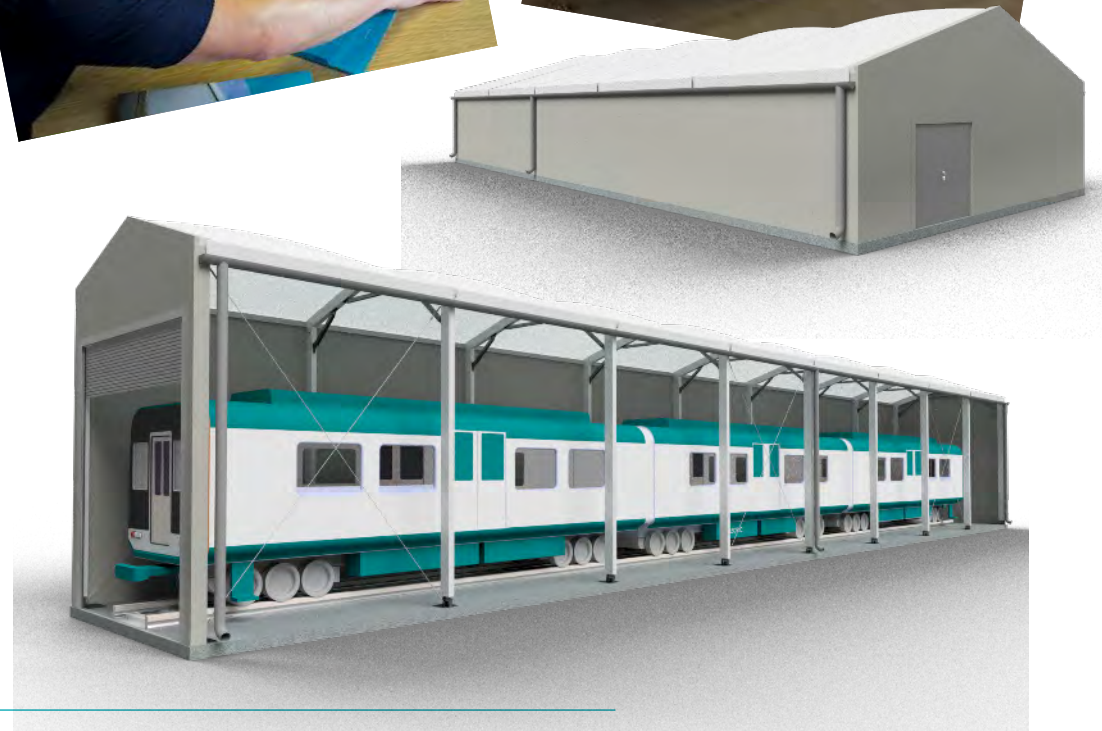
- Mechanical and electrical solutions
- Flooring solutions
- Heating and cooling solutions
- Lighting
- Washroom facilities
- Kitchen supplies
- Partitioning and doors – from pedestrian to roller shutter and speed doors





Customer collaboration – from start to finish

- We aim to provide the support our customers need – when and where they need it.
- We carry out site visits as standard – as often as our customers require.
- Our products are manufactured and designed in-house.
- We can manage the planning permission process on behalf of our customers and also offer a project management service.





Experience and expertise

- Our business has over 45 years of experience and expertise.
- We welcome visitors to our HQ in Uttoxeter.
- Our excellent customer relationships allow us to invite you to visit countless testimonial sites nationwide.
- Our seven-strong team of Area Sales Managers provide truly UK-wide coverage and can offer a site visit within 24 hours.
- All of our temporary buildings are delivered to site, installed and dismantled by our own qualified operations staff.
- This offers our customers peace of mind that all on-site personnel have been fully trained and are compliant with Health and Safety regulations.



Response and reaction time

- Equipped to deal with disasters and quick turn around thanks to our large volume of hire stock.
- Strikes Garden Centre, North Yorkshire - destroyed by fire in April 2018. Spaciotempo installed a fully functional retail facility in 6.5 weeks.
- Rondo Foods, Ireland – warehouse destroyed by fire in December 2016. Spaciotempo installed a new warehouse facility in just 15 days.
- Trinity School, Carlisle – affected by flooding in 2015. Spaciotempo installed a new sports hall in 4.5 weeks.





Mantra Learning Oxygen

- The Oxygen building at Mantra Learning measures 1,612sqm and cost around £1 million to fully install and fit out with equipment. This means the price per sqm was significantly less than buying a permanent facility and kitting it out. 80% of this entire facility is demountable.
- The building can be leased which gives financial benefits - if you also lease the land that the building occupies, this drives additional financial benefits.
- The building is flexible and demountable meaning it can be extended or retracted in line with your business' needs.





Mantra Learning Oxygen

- The building is high enough to accommodate racking, measuring 6m to the eave.
- The Oxygen range is available in widths from 5m to 36m and on eave heights from 4m to 8m.
- The buildings can be customised like the one here at Mantra Learning to reflect company colours and branding.
- Sustainability and environmental impact is that these buildings can be dismantled / moved / reworked unlike traditional builds which in the main, if demolished, end up in landfill.

